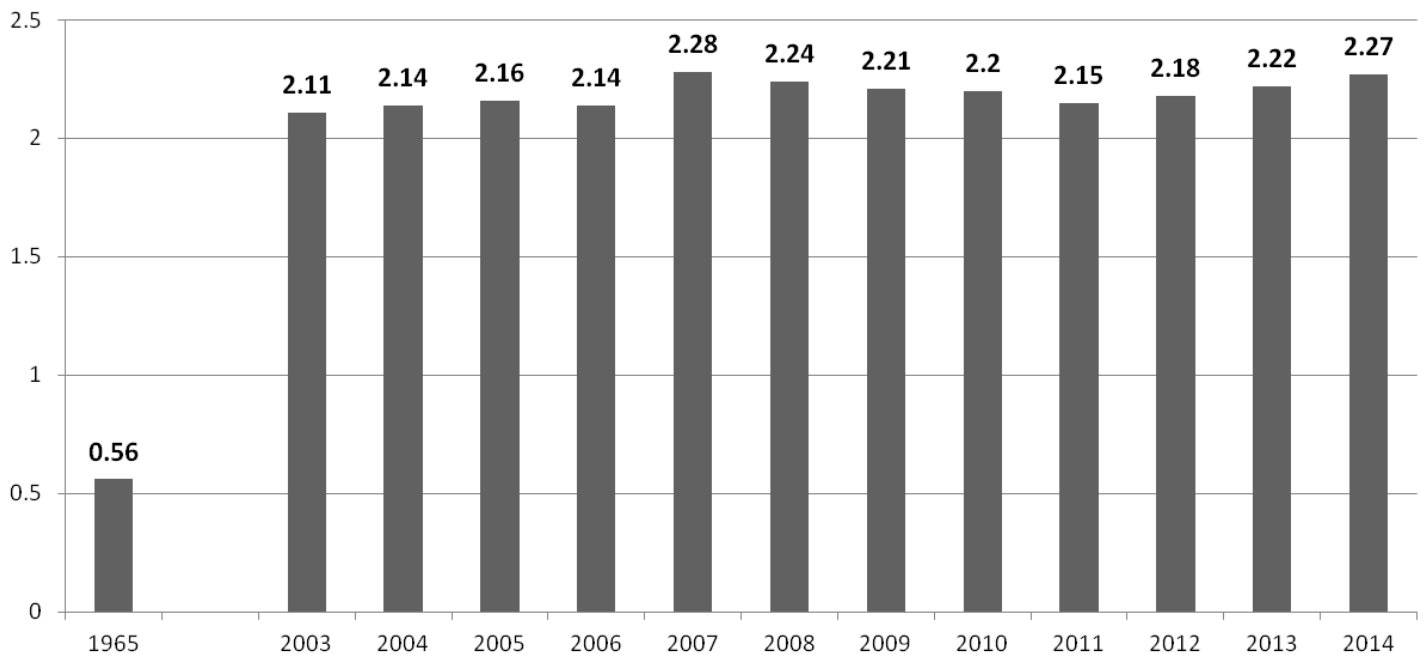




Arts Facts . . . Artist Employment

Artists comprise 1.5 percent of the U.S. workforce (2.22 million), according to the U.S. Bureau of Labor Statistics. While the unemployment rate for artists continues to drop, down to 6.6 percent in 2014, it remains higher than that of all professional workers (3.2 percent).

Artists in U.S. Workforce: 2003-2014 [Millions]



- The U.S. Bureau of Labor Statistics (BLS) reports that there were 2.27 million artists in the U.S. workforce in 2014—representing 1.47 percent of all workers 16 and older. This share of the workforce represents a slight increase from 2013 (1.44 percent).
- In 2014, the unemployment rate for artists fell to 6.6 percent (down from 9.2 percent in 2010). Despite this decline, the unemployment rate for artists remains significantly higher than that of “Professionals Workers” (3.2 percent). This category of workers includes not only artists, but also other occupations that generally require college training.
- This analysis of the artist labor force is composed of just 11 occupational categories: architects; art directors, fine artists and animators; designers; actors; producers and directors; dancers and choreographers; musicians and singers; announcers; writers and authors; photographers; and other artists and entertainers. While these categories do not capture all artists in the workforce, this methodology has been used by the federal government for over 50 years, which makes it a valuable artist employment trend.
- As this is an analysis solely of *artist* employment, it should be noted that many arts-related jobs are not included in these data, such as arts administrators, curators, technical staff, and fundraisers.

Source: National Endowment for the Arts Office of Research & Analysis, Bureau of Labor Statistics, 2014.