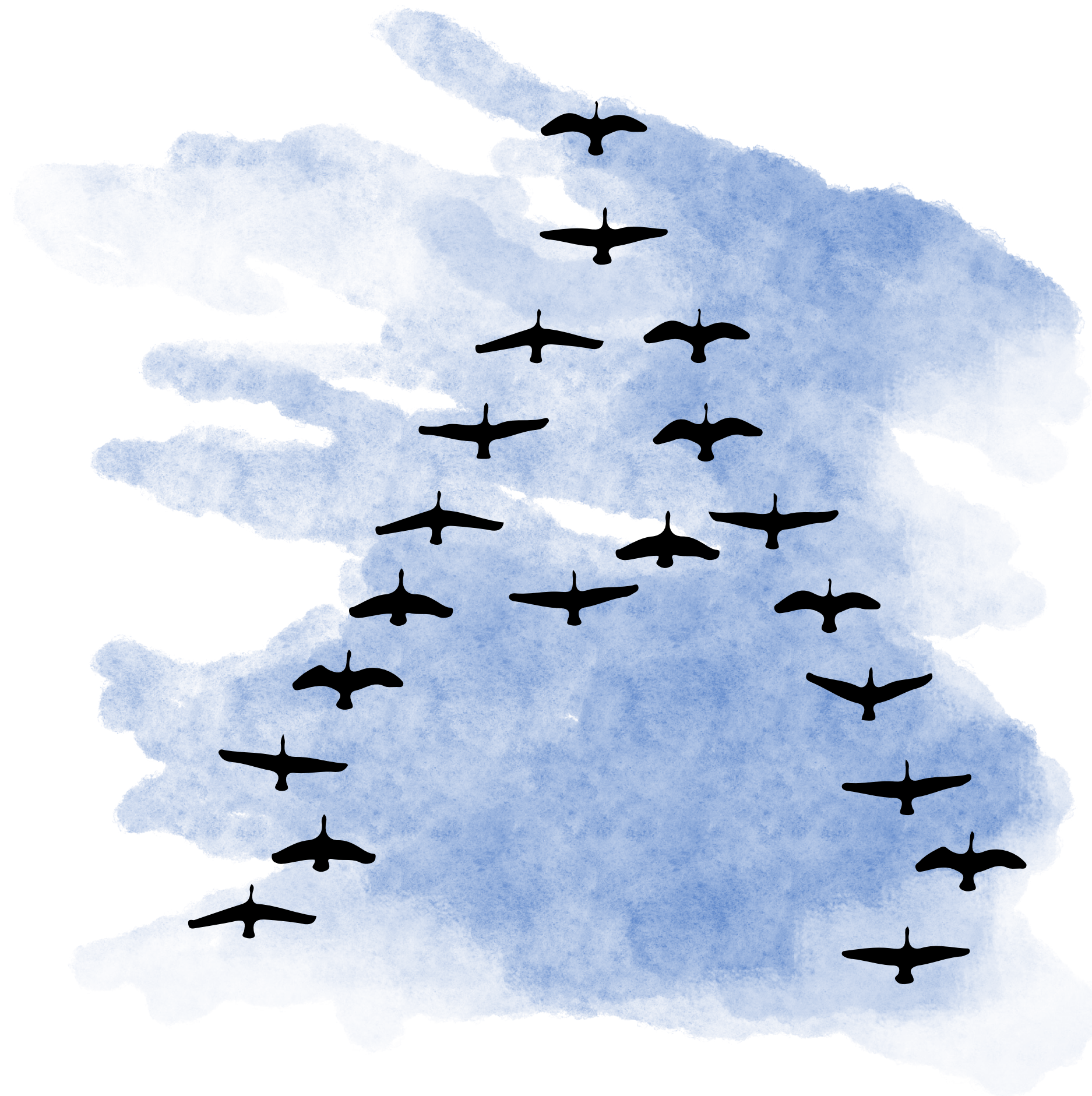


# AESTHETIC PERSPECTIVES

Attributes of Excellence in Arts for Change



## COMMUNAL MEANING

***The creative work facilitates collective meaning that transcends individual perspective and experience***

### **Consider:**

---

How does the creative work afford participants access to collective expression, engagement, and/or reflection?

How is the work relevant to the community, location, or context?

How does the work enhance people's ability to see intersections and make connections (e.g. through dialogue, interaction, or interpretive information)?

How might aesthetic choices support or inadvertently undermine engagement or dialogue?